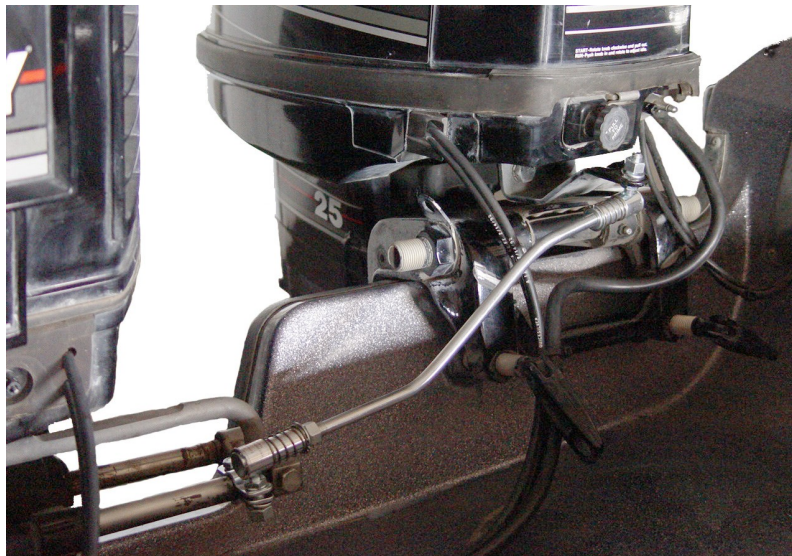




55-2400 Freshwater Steering Kit

55-2600 Saltwater Steering Kit

INSTALLATION INSTRUCTIONS



Typical Installation

Your installation may look different

Rev 12/15

STEERING KIT INSTALLATION

FOR MODELS

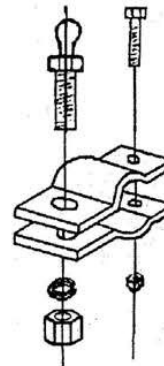
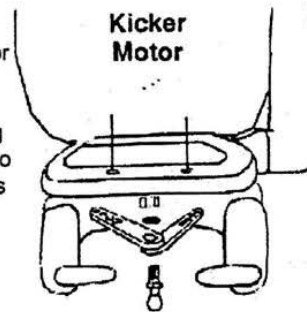
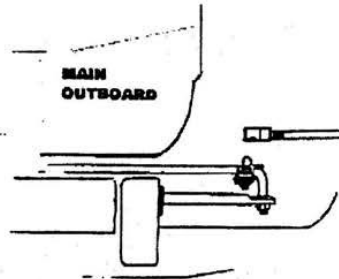
55-2400 ZP STEERING KIT

55-2600 SS STEERING KIT

I. OUTBOARD

Attach one ball stud to the kicker motor through existing holes or using the two ball stud brackets supplied in the kit as shown.

Attach the other ball stud to the main outboard, through existing holes in the front bracket or use the two ball stud clips from kit to clamp around the return rod from the extending steering tube as shown.



Next attach the 24-inch steering rod assembly between the two motors cutting to length and bending if necessary.

Check all clearances by turning steering radius from end to end with outboards in running and fully tilted alternating positions.

NOTE: For outboards with hydraulic steering use Steering Adapter Kit #55-5705

II. INBOARD - OUTBOARD APPLICATION

Attach ball studs to the cavitation plates or kicker motor and main drive lower unit. Connect steering rod between the two.

Run main steering from stop to stop checking for binding. Cut or bend steering rod as necessary.

MarineTech Products, Inc. is proud to offer these fine lines.



SOLUTIONS FOR MOTOR MOUNTING, REMOTE STEERING, TILT & TRIM, SHALLOW WATER ANCHORS, AND SECURITY SYSTEMS



THE ORIGINAL ENGINE-MOUNTED ELECTRIC TROLLING MOTORS—HIGH THRUST WITH WHISPER-QUIET EFFICIENCY



ROD HOLDERS, TROLLING MOTOR SUPPORTS, AND GPS/SONAR MOUNTS



AUXILIARY OUTBOARD MOTOR STEER SYSTEMS



THROTTLE CONTROL FOR GAS POWERED AUXILIARY MOTORS

www.marinetechproducts.com