

#### IN THIS ISSUE

- 2 Chairman's message
- 2 Chamber board and staff
- 3 Award winners
- 4 LFC Youth and Community update
- 4 LFC Community applications available
- 5 Downtown Mural Project
- 5 Changes in the downtown
- 6 ChambersFest needs your support
- 6 May Lunch & Learn seminars
- 6 Cinco de Mayo Regional Mixer
- 6 21st Annual Golf Tournament
- 6 Chambers for Clean Energy
- 7 Around town with the Chamber
- 7 Heritage Center summer hours
- 8 PA Chamber update
- 8 Member spotlights
- 9 Welcome new members
- 9 Milestone anniversaries
- 10 Giving back
- 10 Members in the news
- 12 May calendar of events
- 12 Small Business Week events

#### SAVE THE DATE

**JULY 9-16**

#### **CHAMBERSFEST**

A variety of events will be held during the week-long festival, including the first ever ChambersFest Restaurant Week.

**SEPTEMBER 17**

#### **SIP & SAVOR: BLACK & WHITE BALL**

6 p.m. Cocktail hour  
7 p.m. 4-course food & wine pairing  
10 p.m. After party with DJ & dancing  
Chambersburg Country Club  
Mark your calendar for an elegant night out at this premier food and wine pairing dinner. Stay tuned for more details!

Visit [www.chambersburg.org/events](http://www.chambersburg.org/events) for details about these events and more. April events are listed on the back of the newsletter.

## Business and community leaders honored

The Chamber honored businesses and individuals for their leadership, community engagement and achievements at the sold out Annual Awards Breakfast on April 7 at the **Chambersburg Country Club**, sponsored by **M&T Bank**. Seven awards were presented.

"We are honored to be able to shine a light on our members and the contributions they make to the community," said Noel Purdy, president of the Chamber, during the morning breakfast. "Our members are a reflection of the community and you saw that here today—we have a lot to be proud of."

**Amy Hicks**, executive director of the **United Way of Franklin County**, was honored as this year's international ATHENA Leadership Award recipient, which honors professional, community and personal leadership and those who actively assist women in reaching their full leadership potential and/or personal and professional advancement. The ATHENA Award is sponsored locally by **F&M Trust** and **Jennings Chevrolet, Buick, GMC**.



Amy Hicks

**Hicks** has been with **United Way** almost 10 years, and in that time she has served on several boards of directors and generously gives of her time to programs in the community. She serves as a mentor to others, always making herself available to help fellow nonprofit professionals and volunteers. She has been involved with the Leadership Franklin County program for many years creating a valuable program about needs and resources in the county.

Additionally, **Hicks** continues to focus on the growth and prosperity of Franklin County. She was instrumental in facilitating a team of leaders to initiate a Prosperity Report for Franklin County, which led to identifying the needs of the county based on the report and creating actions to address the needs. Work continues today through initiatives like the Community Education Coalition, which **Hicks** remains heavily involved in.

*Story continued on page 3.*

## Chamber celebrates Small Business Week

The Chamber is coordinating a variety of events, most of which are free, for this year's National Small Business Week from May 1-7 to recognize the critical contributions of our local entrepreneurs and business owners. Workshops hosted by the Chamber is hosting for small business owners and managers will cover topics such as marketing and accessing capital.

Turn to the back page for the full schedule of events hosted by the Chamber for National Small Business Week 2016.



**BOARD OF DIRECTORS**

- Troy Garman**, RE/MAX Realty Agency - Chair
- Eric Foreman**, BB&T - Immediate Past Chair
- Noel Purdy** - Chamber President
- Jim Zimmerman**, Valley Quarries Inc. - Treasurer
- Sherri H. Stahl**, Summit Health - Secretary
- Lance Kegerreis**, Dennis E. Black Engineering, Inc. - CAD/C Vice President
- Michelle Paulnock**, ACNB Bank - Foundation President
- Blake Truman**, VerStandig Broadcasting
- Brian Speer**, Wilson College
- Rod Hocker**, Johnnie's Restaurant & Hotel Service
- Carlos Perez**, Chambersburg Wireless
- Melanie Furlong**, SpiriTrust Lutheran Home Care & Hospice
- Alice Hawbaker**, LCSi Lehman Construction Services, Inc.
- Luke Martin**, Smith Elliott Kearns & Co., LLC
- Kim Crider**, Kim Crider/Take Shape for Life
- Mark Story**, Habitat for Humanity of Franklin County
- Chris Patterson**, Manitowoc Cranes
- Jeff Truhan**, The Shook Home
- Mark Durniak**, Fuddrucker's
- Brad Evans**, Bartlett Tree Expert Company
- Angela Lynch**, Chambersburg Area School District Foundation
- Michael J. Connor**, Walker, Connor & Spang, LLC

**CHAMBER STAFF**

- Noel Purdy - President  
*npurdy@chambersburg.org*
- David G. Sciamanna - Vice President  
*dsciamanna@chambersburg.org*
- Amy Fisher - Communications Director  
*afisher@chambersburg.org*
- Doug Harmon - Membership Director  
*dharmon@chambersburg.org*
- Maryliz Toohig - Financial Director  
*mtoohig@chambersburg.org*
- Robin Harmon - Executive Director of the Chamber Foundation  
*rharmon@chambersburg.org*
- Angie Schaeffer - Exec. Assistant/Office Manager  
*aschaeffer@chambersburg.org*
- Lark Plessinger - Marketing Assistant  
*lplessinger@chambersburg.org*
- Scott Fish - Events Coordinator  
*sfish@chambersburg.org*
- Stacy Guyer - Accounting Assistant,  
*sguyer@chambersburg.org*
- Sue Black - Customer Service Specialist  
*receptionist@chambersburg.org*

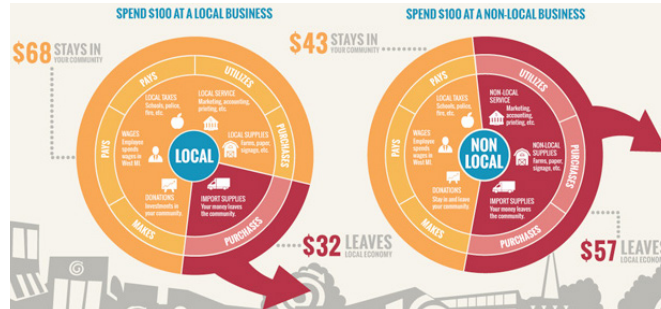
**CHAIR'S MESSAGE**

**Built on small businesses**

You know how it goes... You're going to make a purchase or are in need of a service, and although you think about using the local small business you would have to pass by other large corporations and stores before you get there. You need to make the extra effort to utilize local small businesses.



As community-centered citizens, it is our duty to support these small businesses. By spending money locally, you are putting money directly back into your community. Small businesses donate 250 percent more than larger businesses to nonprofits and community causes. Additionally, for every \$100 spent at a local business roughly \$68 stays in the local economy.



This money is used to pay local taxes which support schools, police, fire, etc., pay wages to local workers, purchase local services and suppliers, and more. This is compared to the \$43 of every \$100 that is spent at a non-local business.


Small Businesses contribute to our local economy, bringing development to the community while stimulating economic growth. More than half of Americans either own or work for a small business, and they create about two out of every three new jobs in the U.S. each year. At our local Chamber, more than 80 percent of member businesses are comprised of 25 or less full-time employees.

Every day small businesses are striving for growth, creating 21st century jobs, driving innovation and increasing America's global competitiveness. They are vital to our community and our local economy, which is why the Chamber is recognizing the impact of entrepreneurs and small business owners by celebrating National Small Business Week from May 1-7. Free workshops will be offered throughout the week to benefit small business owners, in addition to a networking opportunity at the Cinco de Mayo Regional Mixer and the professional leadership development conference, Leadercast.

Visit [www.chambersburg.org/events](http://www.chambersburg.org/events) for the schedule of National Small Business Week events or call the Chamber at 717-264-7101.

**Troy Garman**, Realtor, RE/MAX Realty Agency, *Chair, Chambersburg Chamber*

**Affordable business insurance featuring enhanced coverages — plus the opportunity to earn a dividend.**



Learn how, as a member of the Greater Chambersburg Chamber, you could earn an all-lines\* dividend by placing your insurance with Penn National Insurance.


*\*except bonds and umbrella*

**Call this member agency today!**



**PENN NATIONAL INSURANCE**  
*Feel Secure®*

[www.pennnationalinsurance.com](http://www.pennnationalinsurance.com)



**800-503-8908 • [www.stricklerins.com](http://www.stricklerins.com)**

(CONTINUED FROM COVER)

## Award winners

Also presented at the breakfast awards ceremony were the following:

### Environmental Sustainability: Menno Haven Retirement Communities

In 2010, a group of eight residents and several administrators met to discuss recycling on Menno Haven's campuses. This was the beginning of Menno Haven's "Green Team," a grassroots effort which has implemented a myriad of recycling programs to reduce waste, conserve resources and improve quality of life for their residents. The programs include unused medication collections, a "green ware" option for take-out dining, paper recycling in offices, electronic recycling, CFL light bulbs recycling and used battery collections.



### Innovator of the Year: American Micro Industries



American Micro Industries was founded in 1995 to manufacture custom materials, electrical insulators and machining non-metals. In the beginning, the company consisted of two employees working in a leased office space. Today, American Micro employs 20 people and owns two properties with over 40,000 square feet of manufacturing, warehouse and office space.

They have also expanded to develop acoustic solutions and products offered through their company **Soundproof Cow**, established in 2006. American Micro Industries fulfills niche markets through both their Custom Components Division and Soundproof Cow, putting Chambersburg on the map in the U.S. and internationally.

### Nonprofit of the Year: Habitat for Humanity of Franklin County

Habitat for Humanity builds homes for families with supplies and volunteer hours provided by the community. There are 36 Habitat homes in Franklin County housing 147 people total. The impact of Habitat on our community is diverse, from seeing an increase in grades for children who move into Habitat homes to developing land that has challenges (legal or practical) which turns previously unusable lots into a great place to live. The economic impact is significant, from annual property taxes Habitat homes produce to the return investment of \$3.18 for every dollar spent by Habitat. The organization is expanding, as well, with the opening of the **Habitat ReStore** on Route 30 and hiring of a paid construction manager.



### Property Improvement - Rehabilitation over \$500,000: Wilson College's John Stewart Memorial Library

One of 13 buildings on Wilson College's campus listed on the National Register of Historic Places, the library had been closed since the summer of 2011 due to severe damage caused by cracked steam pipes. Once rehabilitation plans came together, they broke ground on the project in

May 2014. The project consisted of renovating the existing historic library, built in 1923, and an addition from the 1960s. This addition was removed to allow construction of a new addition, as well as a new outdoor plaza. The restoration has created a vibrant and productive work environment for college students of the 21st century, providing access within the expanded library to services such as the Academic Support Center, study rooms, a café, lounge, art gallery, student store and a new Learning Commons.

### Property Improvement - Rehabilitation under \$150,000: Zullinger-Davis-Trinh P.C.

Zullinger-Davis-Trinh moved into their new offices at 74 N. Second St. in October 2015 after completing renovations. The interior remodeling required a lot of work including the addition of a new heating system, renovations to meet handicap accessibility requirements, repairing crumbling, rotted and water-damaged walls, reframing windows and more – all of which was done while maintaining the building's historical integrity. These new offices allow the firm to meet with handicapped clients in their own office, provide off-street parking for employees and clients, and hire two new employees – an additional attorney and an additional support person.



### Volunteer of the Year: Anita Crawford, Springboard Entertainment



Anita Crawford was instrumental in helping Downtown Chambersburg Inc. launch **The Foundry**, an artist cooperative located downtown. The two-year planning effort involved more than fifty volunteers, and Crawford was a leader throughout the entire process. She gave a countless amount of time and energy to soliciting input, creating a business plan, developing marketing materials and more. Once The Foundry opened at 100 S. Main St., she setup the back-end operations, a point of sale system, inventory management and an online member application system. Crawford has contributed much to the effort and she continues to be heavily involved in steering the co-op to success.

The Chamber congratulates all of the award winners and thanks them for their continued support and contributions to the Chamber and the greater community.

#### THANKS TO OUR SPONSORS

##### Grand Sponsor



##### ATHENA Leadership Award

Sponsors:  
F&M Trust  
Jennings Chevrolet

##### Table Sponsors

ACNB Bank, American Micro Industries, Brechbill & Helman Construction Co., Corning Credit Union, F&M Trust, Keystone Health, LCSi Lehman Construction Services, Inc., Manitowoc Cranes, Menno Haven Retirement Communities, Orrstown Bank, Patriot Federal Credit Union, Smith Elliott Kearns & Co., Summit Health, Vacon - A Danfoss Company, Wilson College

##### Patron Sponsors

Central PA Wirelless - Boost Mobile, Hooper Inc., Johnnie's Restaurant & Hotel Service, Inc., Liberty Property Trust, Penn National Insurance, Penn State Mont Alto



Support

# CHAMBERSFEST 2016

and become a sponsor!

**Date:** July 9-16, 2016

**Location:** Throughout Chambersburg

**Projected Attendance:** Thousands!

**Contact:** Amy Fisher, Communications Director, 717-264-7101 ext. 204, [afisher@chambersburg.org](mailto:afisher@chambersburg.org)

**About the event:** Thousands of people enjoy ChambersFest every year, a community celebration for a week in July that salutes the spirit of Chambersburg's townspeople. Sponsors enable the Greater Chambersburg Chamber of Commerce to offer and promote events for the community while boosting the area economy. More than that, sponsors greatly benefit through sponsorships in a number of ways, such as:

- ⇒ **Showcase your business** in front of thousands of area residents and visitors.
- ⇒ **Build brand recognition** for your company.
- ⇒ **Show community support** with your investment to the area.
- ⇒ **Attract potential clients** through your involvement.

Available sponsorships for 2016 include:

### **ChambersFest Corporate Sponsor - \$1,000**

- Logo featured on Greater Chambersburg Chamber of Commerce promotions for ChambersFest (including the Chamber's website, newsletter, e-blasts, flyers and more).
- Logo positioned on the ChambersFest banner, which is displayed throughout the entire month of July.
- Logo featured on the back of the Tim & Susan Cook Memorial Race T-shirts (race is on July 9).
- Company name featured in ChambersFest advertisements in newspapers and publications.
- Mentions of sponsorship on Verstandig Broadcasting's four radio stations.
- One 3"x5" block ad in the Chamber newsletter and one square ad in the e-news, to be used in 2016 - *\$144 value*.

### **ChambersFest Premier Sponsor - \$500**

- Company name listed in promotional materials (including website, newsletter, flyers, advertisements and more).
- Company name featured in ChambersFest articles.
- Two square ads in the Chamber e-newsletter, to be used in 2016 - *\$90 value*.

### **ChambersFest Benefactor Sponsor - \$300**

- Company name listed in most promotional materials (including website, newsletter and more).
- One square ad in the Chamber e-newsletter, to be used in 2016 - *\$45 value*.

### **ChambersFest Contributor Sponsor - \$100**

- Company name listed in most promotional materials (including website, newsletter and more).

**[Yes, I would like to sponsor ChamberFest 2016!](#)**

Company Name (as you want it to appear in listings) \_\_\_\_\_

Contact Name \_\_\_\_\_ Phone \_\_\_\_\_

Email \_\_\_\_\_ Sponsorship Amount \_\_\_\_\_

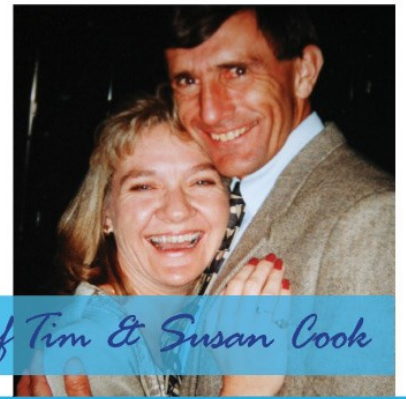
I understand that the submission of this form confirms commitment from the company above for this sponsorship.

Signature \_\_\_\_\_

Return form to Amy Fisher, communications director: Mail to Greater Chambersburg Chamber of Commerce, Attn: Amy Fisher, 100 Lincoln Way East, Suite A, Chambersburg, PA 17201; or email to [afisher@chambersburg.org](mailto:afisher@chambersburg.org); or fax to 717-267-0399.

# Tim & Susan COOK Memorial RACE

2016



Join us for the 13th Annual Tim & Susan Cook Memorial ChambersFest 1-Mile Race/Walk on **Saturday, July 9.**

## Race Schedule:

7AM Registration at Chambersburg Memorial YMCA  
570 E. McKinnley St., Chambersburg, PA  
8AM Women's and Girl's Race/Walk  
8:30AM Men's and Boy's Race/Walk  
9:30AM Results Ceremony  
*Races begin at Chambersburg Area Middle School and end at Chambersburg Area Senior High School.*

## Why We Run/Walk

Tim E. Cook and Susan M. Cook were both 49 when they died on December 13, 2002 as a result of a car accident. Both were 1971 graduates of Chambersburg Area Senior High School (CASHS). Tim was a mathematics teacher at the high school for 28 years and was the coach of the girls' cross country and track teams. Susan was an administrative assistant at Shippensburg University. Money raised from this race is contributed to the Tim and Susan Cook Memorial Scholarship Fund at CASHS.

**Sponsorships  
are available!**

For sponsor levels & benefits, contact  
Scott Fish at 717-264-7101 ext. 212  
or sfish@chambersburg.org



Participants may register and pay online or complete the form below. To register online, visit [www.chambersburg.org/events](http://www.chambersburg.org/events).

## Registration Form:

Name \_\_\_\_\_  
Mailing Address \_\_\_\_\_  
City \_\_\_\_\_ State \_\_\_\_\_ ZIP \_\_\_\_\_  
Phone \_\_\_\_\_ Age on race day \_\_\_\_\_  
Email \_\_\_\_\_

**Race Entered** (circle one): Female Run/Walk Male Run/Walk

**Pre-registration** (encouraged to ensure T-shirt availability):

\$15 per entry without T-shirt, on or before June 26

\$20 per entry with T-shirt, on or before June 26

**Race-day registration:** \$18 per entry, no T-shirt

\$22 per entry with T-shirt (if available)

**T-shirt size** (circle one): Youth L Adult Small Adult M  
Adult L Adult XL None

## Payment Information:

Amount enclosed: \_\_\_\_\_  
*Please make check payable to Greater Chambersburg Chamber of Commerce*  
OR

Charge this amount \_\_\_\_\_ to (circle one):

AMEX Discover MasterCard Visa

Credit Card Number \_\_\_\_\_

Exp. Date \_\_\_\_\_ Sec. Code \_\_\_\_\_

Please complete and return this form to the Chamber office:

100 Lincoln Way East, Suite A, Chambersburg, PA 17201

**Waiver:** Upon acceptance of my entry, I the undersigned, assume all risks associated with running in this event & do hereby release & discharge the Chambersburg Road Runners Club, Chambersburg Area School District, Borough of Chambersburg, and the Greater Chambersburg Chamber of Commerce & all other race representatives from any and all claims for damage, demands & causes of action arising from or as a result of my participation in this race.

Signature: \_\_\_\_\_ Date: \_\_\_\_\_

GREATER CHAMBERSBURG CHAMBER FOUNDATION

## Youth practice public speaking

Public Speaking was the topic of the final session of the Leadership Franklin County (LFC) Youth held on April 5. **Jason Crider** of **Orrstown Bank** worked with the group to teach tips on public speaking. Students were given the opportunity to practice impromptu speeches after being given topics by their peers. These topics ranged from “something you are passionate about” to “macaroni and cheese.” **Crider** then played videos of Toastmaster National Champion speeches for the students to critique and learn tips to apply to their own presentations.



Youth students give impromptu speeches

Last fall, the class was broken up into teams by home school and each team chose a community service project as part of their LFC Youth experience. Part of leadership is understanding your personal values, so each team chose a project that exemplified their values. The projects include: Book Drive for Legal Aid Society, providing inspiration to classmates for Spirit Week at Shippensburg High School, collecting cards for soldiers at Christmas, supply drive for Antietam Humane Society, raising funds for House of Grace, and a food drive for the food pantry.

Each team will present their project during the April 24 Graduation ceremony at **Wilson College**. Each presentation will describe how their team used information from “Five Practices of Exemplary Leadership” by James Kouzes and Barry Posner. The practices include Model the Way, Inspire a Shared Vision, Challenge the Process, Enable Others to Act, and Encourage the Heart. The teams were able to have a practice run of their presentation during the April session and receive feedback from their peers to help them prepare for the graduation ceremony.

LFC Youth is offered free of charge thanks to sponsor **Wilson College**.



## Education and art in the community

Leadership Franklin County (LFC) Community students received an education about education this April. The group met at **Franklin County Career and Technology Center (FCCTC)** and engaged in a discussion about current education issues with **Dr. Eric Michael** of **Wilson College**. **Michael** then broke the class up into groups representing different community groups for a mock school board exercise. Through the exercise, the students were able to gain appreciation for the complexity of decisions that have to be made.

The class then toured FCCTC to learn more about the programs offered. After a lunch provided by the school’s Culinary Department, the group heard from a panel to learn more about other types of schools, including private, magnet, religious, home school, and cyber schools. The panel consisted of **Dr. Mark Long** of the **Chambersburg Career Magnet School**, **Patty Flood** of **Shalom Christian Academy**, **Amy Hicks** of **United Way of Franklin County**, **Ashley Vaughn** who is a homeschool parent and **Michelle D’Antonio** of **Montessori Academy of Chambersburg**.

The class then traveled to the **Capitol Theatre** in downtown Chambersburg to learn about the arts in our community. Students participated in a panel discussion with local arts leaders, including **Heather McEndree** of **Cumberland Valley School of Music**, **Rowan Joseph** of **Totem Pole Playhouse**, **Stephanie Tack** of the **Capitol Theatre** and **Sally Herritt** of the **Chambersburg Community Theatre**. Panelists discussed the importance and impact of art on individuals and the greater community. They also explained the challenges arts organizations face, such as funding, attracting audiences, marketing and more.

After experiencing live art firsthand, the group toured the **Capitol Theatre**. The day was capped off with a special treat - performances from a variety of **CVSM** students ranging from age 5 to 80.

LFC Community is sponsored by **CenturyLink Business**.



## Applications for LFC Community now available

Interested in building your leadership skills while learning more about the community? Apply for the Leadership Franklin County (LFC) Community program. The application deadline is June 30 and tuition is \$1,300. A limited number of scholarships are available.

LFC strives to improve the quality and effectiveness of leadership in Franklin County by bringing together emerging leaders who represent a cross-section of the community. The program creates an awareness of the problems, opportunities and resources available in the area while stimulating a commitment from students to work together to make Franklin County a better place in which to live and work.

Applications are available at [chambersburg.org/ChamberFoundation](http://chambersburg.org/ChamberFoundation). For more information, contact Robin Harmon, executive director of the Greater Chambersburg Chamber Foundation, at 717-264-7101 ext 205 or [rharmon@chambersburg.org](mailto:rharmon@chambersburg.org).

**ServiceMASTER Restore**  
**24 Hour Emergency Response**

- Fire
- Water
- Mold

**717/267-2223**  
**www.smprofclean.com**

IICRC Certified Disaster Restoration Company, family owned and operated since 1985

DOWNTOWN HAPPENINGS

# Get creative with the Downtown Mural Project

For the fourth year, the Downtown Chambersburg Inc. (DCI) Design Committee is coordinating a mural project that will add color and creativity to the public spaces of downtown Chambersburg. Area artists are invited to create an individual mural that will be displayed at various outdoor locations in the downtown area.



Prepared canvases (1/4" primed plywood) will be available free of charge at the Chamber office beginning in early June and will be 2-by-4-feet in size. The deadline for submissions is August 1. The installation will be unveiled at a First Friday Event on September 2. The murals will be judged and awards will be announced on October 15 on the Downtown Chambersburg Facebook page. Community members of all ages are encouraged to participate.

**Guidelines for work:**

- Must be the artist's individual work in design and execution.
- Work must be able to withstand outdoor display for about five months; two coats of marine grade primer are highly recommended.
- Work must be suitable for all ages.
- Committee has the right to determine the suitability of work.
- All mediums and themes are welcome.

Submissions will be photographed and posted on the Downtown Chambersburg Facebook page. For entry forms and more information, email [downtownmuralproject@gmail.com](mailto:downtownmuralproject@gmail.com) or call the Chamber at 717-264-7101.

## SAVE THE DATE! DOWNTOWN EVENTS

### JUNE-SEPTEMBER - SECOND SATURDAYS

Enjoy free concerts and family-friendly movies in Chambers Fort Park on the second Saturday of every month from June through September! Check out the schedule at [www.downtownchambersburgpa.com](http://www.downtownchambersburgpa.com).

### AUGUST 22 - 20TH ANNUAL CRABFEAST

3 - 8 p.m., AMVETS picnic pavilion, 750 Fifth Ave. View the flyer inserted in the newsletter for more info.

### OCTOBER 1 - OKTOBERFEST

More info about the third annual Oktoberfest coming soon.

# Positive changes in the downtown

Downtown Chambersburg continues to grow, with more than \$30 million of major investment planned over the next few years. This includes public and private investments alike, such as the renovation of Central Junior High estimated at \$7 million, the Coyle Free Library expansion and rehab planned for \$4-5 million, \$10 million planned for new construction of townhouses at Southgate Shopping Center and more.

This doesn't include small scale investments that are ongoing, like renovation projects of business owners.

Noel Purdy, president of Downtown Chambersburg Inc., says there is a demand for quality restaurant and retail space. "Recently I've had folks looking for space to start-up a bakery, book store, antique/upcycled furniture and more restaurants," Purdy said.

Some current downtown projects include:

**Fusión** - The Latin American restaurant opened in fall 2014 at 12 W. King St. Since opening, **Fusión** has developed a loyal base of customers with new diners visiting every day. They quickly outgrew their space and are now moving to a bigger location at 175 S. Main St. They will temporarily be closed until renovations and moving are completed.

**The Gift Enclosure** - Renovations have been underway at 78 S. Main St. for the popular downtown gift store



over the past few weeks. In the meantime, **The Gift Enclosure** has been operating from 1 N. Main St. Once store renovations are completed they'll move back to their original location, which will help accommodate more customers.

**J. Bryant Photography & Designs** - **Jamie Bryant** has been an active member of **The Foundry** since it's inception, and when their location at 100 S. Main St. opened **Jamie** began operating her photography business there. She has quickly outgrown the space, so when 76 S. Main St. became available for a new tenant she snatched it up to serve as a larger studio space. Renovations are underway with plans for a ribbon cutting on May 4.

**Other Projects** - Work has started on the exterior of 1 N. Main Street (formerly Tito's Tacos). The property owner, **Chris Drawbaugh** of **Drawbaugh Development**, has received many inquiries for the space and is currently negotiating leases for the entire building. Renovations on the interior will start after leases are finalized. **Drawbaugh** is also a partner in the **Lyons and Company** building, for which plans are underway to renovate the residential apartments above the storefront.

**Drawbaugh**, who owns several properties downtown, is optimistic about the future of downtown as he's had no shortage of interest for commercial space.

# 25th MENNO HAVEN ANNUAL GOLF CLASSIC

THURSDAY, JUNE 2  
*Shotgun start at 8am*

PENN NATIONAL  
FOUNDERS' COURSE  
*Fayetteville, PA*

*sponsored by*

**WARFEL**  
CONSTRUCTION  
CLIENTS FOR LIFE

*All proceeds benefit Menno Haven Benevolent Fund.*

BE A  
SPONSOR  
Call 717.261.2523

THE AUGUSTA NATIONAL - \$3000

2 Foursomes, Logo on 4 Signs, Recognition for providing Flight prizes

THE PEBBLE BEACH - \$2000 - Foursome, Logo on 2 Hole Signs

THE ST. ANDREWS - \$1000 - 2 Golfers, Logo on 1 Tee/Green Sign

THE DONEGAL - \$800 - 1 Golfer and 1 Sign at a Refreshment Table

THE KAURI CLIFFS - \$500 - Logo on 1 Tee/Green Sign, Recognition on Cart Signs

THE BRIAR'S CREEK - \$300 - Recognition on Cart Signs



MENNO HAVEN  
RETIREMENT COMMUNITIES  
[www.mennohaven.org](http://www.mennohaven.org)





DO YOU NEED HELP WITH YOUR



# WORDPRESS OR OTHER WEBSITE?

*Let the professionals help!*

Our experienced team can help you make the changes you need to ensure a professional online presence to represent your company.

## We can help with...

1. Content updates and additions
2. Graphics or site layout
3. Integration with other backend systems (such as inventory)
4. Online store updates
5. Security and PCI compliance
6. Feature addition or modification
7. Migration to CMS software with improved security
8. Wordpress plugin and theme updates

Whatever state your site is in  
and wherever you want to take it

*We can help get you there!*



625 S Washington Street | Greencastle PA 17225  
rob@iwatllc.com | 717.884.9281

**IWATLLC.COM**

## ChambersFest needs your support

Thousands of people enjoy ChambersFest every year, a week-long community celebration in July that salutes the spirit of Chambersburg's townspeople. The Chamber plays a key role in promoting ChambersFest and coordinating some of the events.



ChambersFest takes a lot of time to plan and coordinate, and the Chamber is asking our members for support. Sponsors enable us to offer events for the community while boosting the area economy. Sponsors will have the opportunity to showcase their businesses while supporting events that benefit the community.

For information about the benefits of sponsoring and the various sponsorship levels, view the flyer inside the newsletter. To become a sponsor, contact Amy Fisher at [afisher@chambersburg.org](mailto:afisher@chambersburg.org) or 717-264-7101 ext. 204. Stay tuned for more information about this year's ChambersFest events!

## May Lunch & Learn seminars

**Norland Avenue Pharmacy** will host a free Lunch & Learn seminar titled "Stress: The Good, the Bad and What to Do When It Gets Ugly!" on Thursday, May 12 from 11:30 a.m. to 1 p.m. at the Chamber. **Dr. Wayne Myers** will discuss the different kinds of stress, the effects of stress on the body, emotions under stress and ways to help control stress. Lunch will be provided courtesy of Fuddruckers.

Another Lunch & Learn will be held on Tuesday, May 24 at the Chamber facilitated by "**Mister Ed**" **Gotwalt**, founder of **Mister Ed's Elephant Museum and Candy Emporium**. Mister Ed's "10 Commandments of Good Business" is an entertaining and informative seminar offering simple but often overlooked customer service principles that can put used in the modern workplace.

Lunch & Learns are free to attend, but registration is required. Register at [www.chambersburg.org/events](http://www.chambersburg.org/events) or call 717-264-7101. Any cancellations made within 48 hours and no shows will be billed \$10.

## Cinco de Mayo regional mixer

Don't miss one of the largest mixers of the year - the Cinco de Mayo Regional Mixer on Thursday, May 5 from 5 to 7 p.m. at the **Conference Center at Shippensburg University**, 500 Newburg Rd.

Several chambers from throughout the region participate in this popular mixer each May, which includes beverages and Mexican-themed appetizers. To register, contact the Shippensburg Chamber of Commerce at 717-532-5509 or [chamber@shippensburg.org](mailto:chamber@shippensburg.org).

## 21st Annual Golf Tournament

Spaces are filling up quickly for the 21st Annual Golf Tournament on Thursday, June 30! The tournament will have a shotgun start at 12:30 p.m. at **Waynesboro Country Club**, 1117 Meadowbrook Rd., Waynesboro. registration begins at 11 a.m. with lunch at 11:30 a.m. and dinner following the tournament.



The cost is \$95 per golfer and includes greens fees, range balls, lunch, dinner, drinks, networking and door prizes. A variety of sponsorships are available, including Premier (\$1,000), Benefactor (\$500), Contributor (\$250) and Hole (\$100) sponsors.

To register, sponsor or donate a door prize, contact Doug Harmon at 717-264-7101 ext. 202 or [dharmon@chambersburg.org](mailto:dharmon@chambersburg.org).

## Chambers for Clean Energy

The Chambersburg Chamber recently signed-on to participate in the new clean energy information hub called Chambers for Innovation and Clean Energy. Our goal is to help you, our member companies, navigate the clean energy space, share best practices, spur business innovation and accelerate business competitiveness through clean energy.

All members of our chamber now have exclusive access to information about clean energy initiatives around the nation, incentives in our area, and connections to clean energy leaders throughout the U.S.

Chambers for Innovation and Clean Energy (CICE) is a network of local chambers of commerce focused on helping local chambers of commerce become clean energy leaders and providing participating chambers – like us – with clean energy resources. CICE shares best practices in the clean energy space.

Our goal in participating in this new clean energy information hub is to help our member companies better navigate the clean energy space. If you would like us to share the clean energy resources with you and invite you to the clean energy briefings, please let us know by contacting us at [chamber@chambersburg.org](mailto:chamber@chambersburg.org) or 717-264-7101.

To learn more about CICE, visit [www.chambersforinnovation.com](http://www.chambersforinnovation.com).

### THANKS TO OUR SPONSORS

#### Title Sponsor



Premier Sponsor - VFW Post 1599  
Contest Sponsor - Antrim Way Honda

#### Hole-in-One Sponsor

Antrim Way Honda, Forrester Lincoln, Hamilton Hyundai, Keystone Ford

#### Tent Sponsors

ACNB Bank, F&M Trust

#### Benefactor Sponsors

ACNB Bank, Candlewood Suites, F&M Trust, GDC IT Solutions, Hamilton Hyundai, JFC Staffing, Johnnie's Restaurant & Hotel Service, Keystone Ford, Menno Haven Retirement Communities, Penn National Insurance, Small Business Development Center, Smith Elliott Kearns & Co., State Farm - Kim Stouffer, Strickler Agency, Tele-Plus Corp., Valley Agency Insurance

#### Contributor Sponsor - Summit Health

#### Beverage Sponsors

ACE Distributing, BJ's Wholesale Club, Waynesboro Country Club

AROUND TOWN WITH THE CHAMBER

## Visitors Bureau hosts March Mixer

It was standing room only at the **Franklin County Visitors Bureau's** March Madness Chamber Mixer. Guests enjoyed networking along with shooting hoops in the inflatable basketball hoop. Appetizers were provided by a variety of local restaurants, including **Molly's Restaurant & Carry Out**, **cafe d'italia** and more.



Guests network at the March Mixer at the Franklin County Visitors Bureau



Plenty of networking at the March Chamber mixer

## Chambersburg First Church of God

**Chambersburg First Church of God** cut the ribbon this past Saturday celebrating their new Student Ministry Center and Administrative Wing. They are located at 2230 Grand Point Rd. in Chambersburg. All are welcome!



The ribbon is cut at Chambersburg First Church of God

### Chambersburg Heritage Center Summer Hours

The Chambersburg Heritage Center, an initiative of the Chamber, is open from 8 a.m. to 5 p.m. on weekdays. It will also be open from 10 a.m. to 3 p.m. on Saturdays now through October 15. The Heritage Center extends its Saturday hours during special events such as ChambersFest, AppleFest and Oktoberfest. Located at 100 Lincoln Way East in downtown Chambersburg, there is no admission charge, except for group tours.

For more informaton about the Heritage Center, visit [www.chambersburg.org/HeritageCenter](http://www.chambersburg.org/HeritageCenter).



Members of the 11/30 Network visit Jan Zell Wines on their wine tour

## 11/30 Network tours local wineries

The first ever 11/30 Network Wine Tour took more than 30 young professionals to visit local wineries and Chamber members. The tour began at **Jan Zell Wines**, followed by **Adams County Winery** and ending with a food and wine pairing at **Reid's Winery and Cider House**. Bus transportation was provided courtesy of Gift Transportation. We hope all the 11/30 Network members and their guests had a fantastic time!



LFC students, faculty and alumni network with prospective LFC students

## Reception attracts prospects for LFC

A reception held at the Chambersburg Heritage Center to inform people interested in the Leadership Franklin County (LFC) Community program drew several prospects for the class of 2017. At the reception, attendees were able to talk to current students, faculty, alumni and steering committee members to learn more about the program which runs from September through May each year. Recruitment for the class of 2017 will continue through June 30. For information about the program or application process, turn to page 4. LFC is coordinated by the Greater Chambersburg Chamber Foundation.



# 5TH ANNUAL FRANKLIN COUNTY GOLF OUTING

## Thursday, June 30, 2016

This tournament benefits the Frances Leiter Center's play therapy services for at-risk children. Funds raised make it possible for us to provide therapy services for low income children.

This year's golf benefit will be held at:

### **Chambersburg Country Club**

3646 Scotland Road

Chambersburg, PA 17202

Phone: 717.263.8296

[www.chambersburgcountryclub.org](http://www.chambersburgcountryclub.org)

4 Person Scramble

12:00 p.m.-1:00 p.m. Registration & Lunch

For more information please contact Jan Zeigler, CFRE, Director of Development at 717.624.4461 or [jzeigler@cassd.org](mailto:jzeigler@cassd.org)

### **Golfer Registration:**

Individual Golfer: \$85  
 Foursome: \$320  
 -Men's and Mixed Divisions

- Golfer registration includes box lunch, cart, greens fees, range balls, snacks, prizes and appetizers following the tournament.
  - Mulligans and Powerballs will be available.
  - PLEASE, NO ALCOHOLIC BEVERAGES
- Registration Deadline ~ June 17, 2016**

### **Sponsorship Opportunities:**

Sponsorship details available at [www.cassd.org](http://www.cassd.org)

**Eagle Sponsor: \$2,500**

**Birdie Sponsor: \$1,250**

**Cart Sponsor: \$600**

**Hole Sponsor & Foursome: \$425**

**Hole Sponsor: \$125**

**Friends Listing: \$50**

**Sponsorship Deadline ~ June 17, 2016**

Please complete this form and mail with payment to Children's Aid Society  
 (343 Lincoln Way West, New Oxford, PA 17350)  
 before June 17, 2016

### **Registration Form**

Company/Individual Name: \_\_\_\_\_  
 Contact: \_\_\_\_\_  
 Mailing Address: \_\_\_\_\_  
 City: \_\_\_\_\_ State: \_\_\_\_\_ Zip Code: \_\_\_\_\_  
 Phone: \_\_\_\_\_ Fax: \_\_\_\_\_  
 Email Address: \_\_\_\_\_

If applicable, list your teammates below:

1. \_\_\_\_\_
2. \_\_\_\_\_
3. \_\_\_\_\_
4. \_\_\_\_\_

Please charge my:  MasterCard  Visa  Discover

Name on card: \_\_\_\_\_  
 Card Number: \_\_\_\_\_  
 Exp Date: \_\_\_\_\_ 3-digit CID : \_\_\_\_\_  
 Signature: \_\_\_\_\_  
 Zip Code: \_\_\_\_\_

### **I am interested in:**

- Hole Sponsor & Foursome—\$425  
 Foursome—\$320  
 Sponsorship—Level: \_\_\_\_\_  
 Individual Golfer—\$85/golfer

**Total Amount: \$ \_\_\_\_\_**

**children's** AID SOCIETY  
Southern PA District Church of the Brethren



**SAVE  
THE  
DATE!**

We Are Celebrating *30 Years*  
of the Frances Leiter Center  
Helping Children in Franklin County

**The CHILDREN'S AID SOCIETY  
ANNUAL DINNER will be held  
Saturday, OCTOBER 29, 2016  
at GREENCASTLE CHURCH OF THE BRETHREN**

**Sponsorship Opportunities**

Friends Listing: \$100  
Table Sponsor: \$200  
Silver Sponsor: \$250  
Gold Sponsor: \$500  
Platinum Sponsor: \$750  
Guardian of Children Sponsor: \$1,000

For more information contact Jan Zeigler, CFRE, Director of Development  
717-624-4461 ext. 203, [jzeigler@casd.org](mailto:jzeigler@casd.org)

PA CHAMBER UPDATE

## Business feedback sought on proposed tax hikes

Can your business afford more tax hikes? In an effort to defeat the Wolf administration's \$2.7 billion in proposed tax hikes in the 2016-17 state budget, the PA Chamber is soliciting comment from its broad-based membership on how numerous tax increases offered by Gov. Wolf for the upcoming fiscal year would impact businesses' bottom line.



The proposed increases include: a retroactive increase in the Personal Income Tax; a retroactive increase in the Bank Shares Tax; a 6.5 percent severance tax on the natural gas industry; a monthly cap on the vendor's allowance; an expansion of the Sales tax base; a new tax on property, casualty and fire insurance; and a waste removal tax, among other tax increases. Governor Wolf says the taxes are necessary to close a structural deficit. But he's not proposing any real solutions to rein in the Commonwealth's public pension deficit, which is expected to climb to \$58 billion this year.

The PA Chamber is urging lawmakers to enact comprehensive pension reforms before approving any new state spending. We're also stressing that in a slow growth economy, \$2.7 billion in tax hikes will give employers greater pause when thinking about hiring new workers or investing in their companies.

In working to defeat this tax and spend agenda, the PA Chamber relies on feedback which they take to the pro-business lawmakers who are working to build a stronger Pennsylvania. Make sure your voice is heard and share your feedback with the PA Chamber online at [www.pachamber.org/campaigns/index.php?c\\_id=16](http://www.pachamber.org/campaigns/index.php?c_id=16).

## Workforce Summit with Mike Rowe

The 2016 Workforce Summit on May 18 from 11:30 a.m. to 3:45 p.m. at Hershey Lodge will look at the challenges and solutions on how all groups - businesses, trade schools, colleges and universities, and communities - can work together to reinvent how today's students are educated for tomorrow's workforce.



Mike Rowe, creator, executive producer and host of CNN's *Somebody's Gotta Do It* and Discovery's *Dirty Jobs*, will discuss how Pennsylvania's business community can change the message, dialogue and perception of pursuing a career in the skilled trades. As the CEO of the *mikeroweWORKS* Foundation, a 501(c)(3) charity, he spends a significant amount of time speaking about the country's dysfunctional relationship with work, the widening skills gap and challenging the persistent belief that a four-year degree is automatically the best path to take. Visit [www.pachamber.org](http://www.pachamber.org) for details and registration.

*These article were contributed by the Pennsylvania Chamber of Business and Industry. For more information, visit [www.pachamber.org](http://www.pachamber.org).*

MEMBER SPOTLIGHTS

## Creative Engraving Plus

25 West King Street, Shippensburg, PA 17257 | 717-477-2125  
[www.creativeengravingplus.com](http://www.creativeengravingplus.com) | [amy@creativeengravingplus.com](mailto:amy@creativeengravingplus.com)

**Creative Engraving Plus** is the new leading provider in customized corporate awards/ gifts, promotional items, sports awards



and personalized gifts. Located in downtown Shippensburg, **Creative Engraving Plus** can be your one stop shop for all your personalization needs. Whether you are in need of crystal awards for your corporate banquet, medals for your local soccer team or a personalized phone cover for your niece, we've got you covered!

We offer a wide variety of items on our website, or bring us your item. Some of the items we offer include: Crystal and acrylic awards, plaques, trophies, medals, travel/coffee mugs and glassware. Along with those we offer phone covers, key chains, pens, holiday ornaments, signs, banners, promotional items and unique gifts.

At **Creative Engraving Plus**, we take pride in our ability to deliver quality products to our clients. We have spent countless hours seeking out products we think our clients will love. With our equipment we have the ability to work on a variety of materials such as acrylic, wood, glass, fabric, plastic, metal and more. Our many different processes include laser engraving, sand carving, sublimation (ink transfer), large format printing and graphic design services.

## Summit FastCare

993 Wayne Avenue, Chambersburg, PA 17201  
[www.summithealth.org](http://www.summithealth.org) | 717-264-3278

Our team of medical experts is compassionate, dedicated and ready to provide you and your loved ones with the care you need and deserve – whenever and wherever you need it.



More than ever, we understand how busy people get, especially working professionals. Need minor medical care in a hurry? **Summit FastCare** can help. **Summit FastCare** is located on Wayne Avenue right next to Customer Service inside **Giant Food Store**. If you're not sure if it's just the sniffles or a sinus infection, or your child needs a sports physical, we are here for you!

You can also count on our nationally recognized hospitals and distinguished practices to provide quality care and accessible services in our community.

So, whether it's an unexpected visit to our urgent care for a sprain or a planned orthopedic surgery, **Summit Health** is here to meet your needs, close to home and work.

MEMBER SPOTLIGHTS (CONT.)

## Tower at Falling Spring

200 N. Main St., Chambersburg, PA 17201  
717-263-0119 | www.habitatamerica.com  
manager220@habitatamerica.com



Live worry free at the **Tower at Falling Spring** in historic downtown Chambersburg. Affordable senior living apartments for those 62 and older. The **Tower at Falling Spring** features 104 apartments that are income-based; 88 are one bedroom and 16 are two bedrooms, which includes a dozen that are handicap accessible.

The **Tower at Falling Spring** is one of the only senior housing complexes in Franklin County and features the tallest building in Chambersburg. There are many amenities, and it is also pet-friendly. The **Tower** wants to keep its residents active by offering monthly events and fun things to do. Many caregiver agencies come into the Tower to help with the daily needs of residents.

Safety and security is the key at the **Tower at Falling Spring**. The management office provides 24 hour maintenance on call, security cameras at all entrances, key card and key access. Office hours are 8 a.m. to 4 p.m. Monday through Friday.

WELCOME NEW MEMBERS

*Real Estate*

### **Brentwood Village LLC, Lincoln Way East Shopping Center**

Jennifer Martin  
Steven Franco  
Lincoln Way East  
Chambersburg, PA 17202  
(301) 526-4153  
rogermarc69@gmail.com

*Restaurants*

### **CJ's BBQ Smokehouse**

Tracy Stains  
975 Lincoln Way West  
Chambersburg, PA 17202  
(717) 261-4760  
tracy@cjssmokinbbq.com

*Schools, Colleges & Universities*

### **Lancaster County Career & Technology Center**

Vance Miller  
432 Old Market Street  
PO Box 537  
Mount Joy, PA 17552  
(717) 653-3003  
www.lctc.org  
vmiller@lctc.org

*Industrial Supplies & Services*

### **Lehman's Grind and Shine Concrete**

Justin Lehman  
3521 Turnberry Drive  
Chambersburg, PA 17202  
(717) 377-9765  
jwlehman980@gmail.com

*Retirement & Living*

### **Menno Haven Auxiliary**

Melissa Rabon  
1500 Northfield Drive  
Chambersburg, PA 17201  
(717) 217-5400  
www.mennohaven.org  
marabon@mennohaven.org

*Motivational Speaker*

### **Mister Ed's Motivational Speaker - Ten Commandments of Good Business**

Ed Gotwalt  
6019 Chambersburg Road  
Chambersburg, PA 17201  
(717) 873-5145  
edwingotwalt@gmail.com

*Employment Services*

### **PeopleShare**

Shane Henry  
120 Chambers Hill Drive  
Chambersburg, PA 17201  
(717) 267-1600  
www.peopleshareworks.com  
shenry@peopleshareworks.com

*Martial Arts Instruction*

### **Premier Martial Arts of Chambersburg**

Mike Bolding  
1613 Orchard Drive  
Chambersburg, PA 17201  
(717) 262-4141  
www.premiermartialartschambersburg.com  
pma.masterbolding@gmail.com

*Telecommunications*

### **Sprint Premier Store - MJW Group Inc.**

Matthew Goehres  
132 Lincoln Highway East  
Unit F-5 Chambersburg, PA 17202  
(717) 404-7452  
www.sprint.com  
mgoehres@mjwgroup.biz



MILESTONE ANNIVERSARIES

*45 Years*

**A-1 Motors, Inc.**  
**Wenger & Myers Insurance, Inc.**  
**William A. Brindle Associates, Inc.**

*30 Years*

**Physical Therapy etc.**

*15 Years*

**Alternative Education Services P.C.**  
**Franklin County Crime Solvers**

*1 Year*

**25 Penn Marketing**  
**Bullseye Media & Marketing**  
**Courtyard by Marriott Shippensburg**  
**Grocery Outlet**  
**Over Achieve Fitness**  
**Rt. 30 Family Restaurant**  
**StretchPak, Inc.**

**Chambersburg HERITAGE CENTER**  
Exhibits • Gift Shop • Walking Tours

**Free Admission!**

Hours: M-F 8a-5p, Sat. in May-Oct. 10a-3p  
100 Lincoln Way East, Chambersburg, PA



# TOTEM POLE

## PLAYHOUSE

Pennsylvania's Premiere Summer Theatre

In Caledonia State Park

**2016 SEASON**

Back by popular demand!

**LOVESICK BLUES**

May 17–22, 2016

**SIX DANCE LESSONS IN SIX WEEKS**

May 27—June 12, 2016

**FOREVER PLAID**

June 17—July 3, 2016

**ONE SLIGHT HITCH**

July 8–24, 2016

**A FUNNY THING HAPPENED ON  
THE WAY TO THE FORUM**

July 29–August 14, 2016

**A CHRISTMAS CAROL**

*Presented at Gettysburg College's  
Majestic Theater*

December 8–18, 2016

Majestic Theater (717) 337-8200

**Box Office: (717) 352-2164**

**Toll Free: 1-888-805-7056**

9555 Golf Course Rd., Fayetteville, PA 17222

[www.TotemPolePlayhouse.org](http://www.TotemPolePlayhouse.org)





# TOTEM POLE

## PLAYHOUSE

presents

Charles Dickens'

# A Christmas Carol

In association with Gettysburg Community Theatre

at Gettysburg College's Majestic Theater



**\*2016 DATES\***

**December 8, 9, 10, 15, 16, 17  
at 8:00 p.m.**

**December 10, 11, 14, 15, 17, 18  
at 2:00 p.m.**

**\* \* \* \* \***

Tickets On Sale:

July 1 for Totem Pole Subscribers

August 1 for General Public

At the Majestic Theater Box office

717-337-8200

Tickets \$30-\$36

**\$10 discount for Totem Pole Playhouse  
season subscribers**

*"Totem Pole's production is an uplifting show that puts a new face on this old tale by Charles Dickens." -David Dunkle, PennLive*

GIVING BACK

**ServiceMaster Professional Cleaning** recently donated \$575 to enable one high school student to attend the Pennsylvania Free Enterprise Week 2016. This donation is an investment in the future of Pennsylvania and the nation as it teaches future leaders to understand and embrace the private enterprise system.

**Ida Jeanne Smith**, a resident at **SpiriTrust Lutheran, The Village at Luther Ridge**, has been volunteering her sewing talents by hand-making burden bears for SpiriTrust Lutheran Home Care & Hospice since April of 2010. A burden bear is a small bear wrapped in a quilted blanket and given to hospice clients to provide a sense of comfort and encouragement. Smith hand picks and purchases all the materials and has made 239 Burden Bears so far. Clients and family members are very appreciative and enjoy having something to hug and hold on to. If you'd like more information on the Burden Bear program, hospice program or any of our services, please call SpiriTrust Lutheran Home Care & Hospice at 800-840-9081.

**Do something good? Have news to share?** Submit an item for Giving Back and Members in the News! Email your press release or a one paragraph write-up to Lark Plessinger at [lplessinger@chambersburg.org](mailto:lplessinger@chambersburg.org).

MEMBERS IN THE NEWS

**Robert J. Hickey Jr.** with **RE/MAX Realty Agency** has received the RE/MAX Circle of Legends Award, which honors highly successful agents who have earned more than \$10 million in commissions and have completed 10 years of service with the company. Since its inception in 2001, the Circle of Legends Award has been achieved by less than half of one percent of all active agents in the RE/MAX network. Hickey has been working in the real estate industry for more than 26 years and has extensive experience as an associate broker and independent agent with Samuel Small at RE/MAX.



**Tapestry Technologies** CEO, **Jacquie Sipes**, and Chief Information Security Officer, **Cindy Whitmer**, were both honored as recipients of the Employer Support of the Guard and Reserve Patriot Award. The Patriot Award recognizes the commitment and flexibility individual supervisors provide staff members serving in the Guard and Reserve, as well as their families. Through flexible work schedules and pre/post deployment leave arrangements, the award honors the measures taken by supervisors to support Citizen Warriors' service to our nation. Tapestry Technologies is a woman-owned small business under \$27.5 million, located in Chambersburg.

**Waynesboro Hospital** was named one of the nation's 100 Top Hospitals® by Truven Health Analytics™, a leading provider of data-driven analytics and solutions to improve cost and quality of healthcare. The Truven Health 100 Top Hospitals® study identifies hospitals and leadership teams that provide the highest level of value to their communities based on performance across 11 key measures including patient care, operational efficiency and financial stability.



**Orrstown Bank** is pleased to announce the recent hiring and/or promotion of **Chris Bickle, Denise Burgan, Jeff Gayman** and **Cheryl Tucci**. Bickle joined Orrstown as vice president and commercial real estate lender with more than 10 years of banking experience. Burgan joined Orrstown as vice president of lending operations. She previously worked as the consumer loan operations supervisor for Susquehanna Bank for 12 years. Gayman, who has been with Orrstown 20 years, was promoted to executive vice president of retail banking and consumer lending. Tucci joined Orrstown as vice president, deposit operations manager. Most recently, she served as assistant vice president and operations analyst.



**Shalom Christian Academy** is pleased to offer Summer@Shalom 2016 Enrichment Camps. All children in the community entering grades one through 11 are welcome. These weeklong specialty camps include Van Gogh Art Camp, Picasso Art Camp, LEGO® Camp, Water Works Camp, Dough (Cooking) Camp and State Parks Camp. Costs range from \$75 to \$150; register by May 15 for early bird discounts. Early drop off and pick up is available. To learn more about Shalom's summer enrichment camp options or to register, visit [www.shalomca.com/summer](http://www.shalomca.com/summer) or call 717-375-2223.

**Summit Health** is hosting a Wellness at Work seminar on May 11 starting at 7:30 a.m. The roundtable presentation will focus on how injury, inside or outside of the workplace, can lead to addiction in the workplace. The feature presenter will be April Brown of **Franklin and Fulton County Drug & Alcohol**, addressing the opioid drug epidemic in our area and how drug and alcohol addiction relates to local employers. Please contact **Jamie Goetz** with questions at 717-267-7928 or [jgoetz@summithealth.org](mailto:jgoetz@summithealth.org). Register by May 9 at [www.summithealth.org/corporate-wellness/employer-roundtable](http://www.summithealth.org/corporate-wellness/employer-roundtable).

Sixteen key members of the **WPS Office Solutions** team and their guests earned a seven-day reprieve from the wintry weather as



they accompanied President **Deb Dellaposta** on a company incentive trip to St. Maarten. The trip was a celebration of the individuals within the 96-person, four-location company who qualified for the company's "President's Club," rewarding employees for outstanding performance. Winners included people in the company's sales, service and administrative teams.

**The Boys & Girls Club of Chambersburg and Shippensburg** is hosting its annual 5K Super Hero Run on Saturday, May 21. The event will be held rain or shine and followed by an open house at the Boys & Girls Club. Participants are encouraged to dress up as their favorite hero or run in honor of their hero. For more information, visit [timberhilltiming.com](http://timberhilltiming.com). Sponsorships are also available; email **Cressa Coldsmith** at [coldsmith@bgccs.org](mailto:coldsmith@bgccs.org) for details.

**Shalom Christian Academy** is hosting its Annual Dutchfest on May 6 and 7. This event offers family fun for everyone including amazing food choices, a huge selection of auction items, a vendor area with crafts and other specialty items and so much more. Kids will love the fun activities, bounce house and petting zoo. On May 7, the annual 5K Run/Walk and 1K Fun Walk will be held. For more information and complete schedule, visit [www.shalomdutchfest.com](http://www.shalomdutchfest.com).

Accounting firm **Boyer & Ritter LLC** has been recognized as one of the "Top 100 Organizations" in the state by Pennsylvania Business Central Magazine. This year, Boyer & Ritter was also recognized as one of the top 27 firms in the Mid-Atlantic by Accounting Today Magazine list of regional leaders and was one of only four firms in Pennsylvania to be included in the list. In keeping with Boyer & Ritter's commitment to hiring and retaining top talent, in 2015 the firm earned a place among the Best 50 Places to Work in PA for 2015. It marked the eighth consecutive year it placed in the contest, sponsored by Team Pennsylvania, the state Department of Community and Economic Development and the Central Penn Business Journal.



The Foundation for Free Enterprise Education recently awarded the Greater Chambersburg Chamber of Commerce with a 2015 Commendation. This is in recognition of outstanding support to the Pennsylvania Free Enterprise Week 2015. The Chamber is dedicated

to supporting this event that helps promote, develop and present the concept of free enterprise to Pennsylvania's youth.

**South Central Community Action Programs (SCCAP)** is hosting community walks every Saturday for community members to walk together. The event is free and is designed to reduce stress and provide a fun activity for all ages. Each Saturday at 6:30 p.m., "Walk Leaders" will initiate the activity from a different starting point in the town. News about each walk will be available on The Community Walking Project Facebook page. Each Saturday, routes are planned to start where there is adequate parking. To encourage consistent participation, all walkers will be entered into a monthly raffle. For more information, contact **Anita Cramer** at 717-263-5060 ext. 232.

The Maryland Board of Nursing recently gave approval for **Kaplan University** to offer its nurse practitioner programs to students in Maryland. The approval allows KU Maryland and its campuses in Hagerstown and Rockville to begin enrolling prospective students in the nurse practitioner programs within the next month.

**The Arc of Franklin & Fulton Counties** is hosting several events in May. The Annual Charity Golf Classic will be held on May 6 at Whitetail Resort. The event will begin at 11 a.m. and cost \$75 per player. Also this month is Paint Nite scheduled for May 18 at 7 p.m. at the Norland Pub. Tickets are \$45 each with \$15 donated to the Arc. On May 22, the Arc will host Girls' Time Out Craft Afternoon at Scotland Community Center. For more information about these events, or to register, please call Lacy-J at 717-264-4390. The Arc of Franklin and Fulton Counties provides services for individuals who have intellectual and developmental disabilities throughout the area.

The **American Cancer Society's** Chambersburg Relay For Life is June 10 at Norlo Park and provides a unique fundraising event that does much more than raise money for the American Cancer Society. Relay For Life celebrates cancer survivors & caregivers, remembers those who have lost their battle and honors those who have won or are in the midst of cancer treatments. Teams of people from families, businesses, places of worship, clubs and organizations raise money and walk in a park for 24 hours. Teams enjoy food, entertainment, family activities and some camp out during the event. Sponsorships are available as well as signing up a company team at [www.relayforlife.org/pachambersburg](http://www.relayforlife.org/pachambersburg). Contact **Connie Woodruff**, at [connie.woodruff@cancer.org](mailto:connie.woodruff@cancer.org) or 717-846-2561 for details.

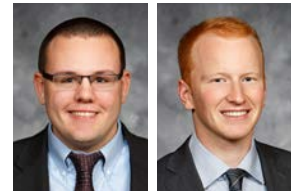
**The Capitol Theatre** will feature On Golden Pond from May 13 to 15 and 20 to 22. Come enjoy the show put on by **Chambersburg Community Theatre** and directed by Matthew Henning! Order tickets online at [www.thecapitoltheatre.org](http://www.thecapitoltheatre.org) or call 717-263-0202.

**The H. Ric Luhrs Center at Shippensburg University** will present Sinatra Forever: Salute to Frank Sinatra on May 14 at 7:30 p.m. Enjoy this concert that pays homage to one of the greatest singers of all time. Tickets are available by calling the box office at 717-477-7469 or visiting [www.luhrscenter.com](http://www.luhrscenter.com).

**Totem Pole Playhouse** has announced Emmy Award winner Loretta Swit ad L.A. Ovation Award winner David Engel will star in Six Dance Lessons in Six Weeks from May 27 through June 12. Details at [www.totempoleplayhouse.org](http://www.totempoleplayhouse.org).

**Boyer & Ritter, LLC** recently hired two associates to serve its growing client base.

**John M. Negri** is a 2015 graduate of Indiana University of Pennsylvania (IUP), where he earned an accounting and finance dual baccalaureate with a minor in economics. **David B. Creamer Jr.** is also a 2015 graduate of IUP, where he earned an accounting and economics dual baccalaureate.



Let us develop a comprehensive plan to protect your business, your family, and your bottom line. Our extensive portfolio includes:

- Individual and Group Health Insurance
- Medicare Products
- Dental and Vision Insurance
- HR Solutions
- Energy Savings Program
- Voluntary Benefits and Personal Insurance

1-800-377-3539 or visit [www.chamberchoice.com](http://www.chamberchoice.com).

Strategic Program Partners



# QuickBooks® Step-by-Step Training Manual Provided



Dates: May 25, 2016  
June 15, 2016

Location: 720 Norland Avenue  
Chambersburg, PA 17201

Time: 9:00AM – 12:00PM



Scan QR code with  
mobile device for more info.

## 4 Easy Ways to Register Now!

Call: 800-555-9510 or 717-267-2100

Fax Completed Registration: 717-267-1464

On-Line: [www.schultheisscpa.com](http://www.schultheisscpa.com) – click on the resources link

Mail Below Registration: Schultheiss & Associates  
720 Norland Avenue  
Chambersburg, PA 17201

### Is Your Office Making These 21 Critical Mistakes?

- 3 QuickBooks® errors that hurt cash flow in your office.
- 7 Mistakes to avoid in “costing” and why they hurt you.
- 5 Ways to reduce payroll headaches - the one best fix.
- 3 Reports that will stop wasted expenses and overhead.
- 3 Critical errors in setting up your chart of accounts.

### Who Should Attend QuickBooks® Training?

- **Spouses** who help with the books on a part-time basis.
- **Business owners** who want to avoid mistakes and improve cash flow.
- **Partners** looking for long-term answers to accounting problems.
- **Bookkeepers** who need a better understanding of QuickBooks®.
- **First-time** users just new to QuickBooks® software.
- **Seasoned users** who want to take advantage of the advanced features of QuickBooks®.

Course: \$129 per person. \$100 per person if two or more attendees from same company.  
(includes continental breakfast)

Name: \_\_\_\_\_

Company Name: \_\_\_\_\_

Address: \_\_\_\_\_

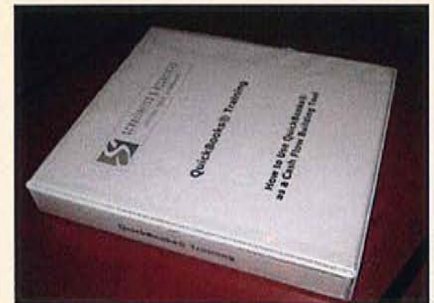
City: \_\_\_\_\_ State: \_\_\_\_\_ Zip: \_\_\_\_\_

Phone: \_\_\_\_\_

E-Mail: \_\_\_\_\_

Additional Registrants: 1. \_\_\_\_\_

2. \_\_\_\_\_



Payments Accepted: Check ♦ Cash ♦ Mastercard ♦ Visa



Visit our Facebook page – [www.facebook.com/schultheisscpa.com](http://www.facebook.com/schultheisscpa.com)



21<sup>ST</sup>  
ANNUAL

# CRABFEAST

## CHAMBERSBURG

SAT AUG 27 // 3-8PM

@ AMVETS PICNIC PAVILION

Doors open at 3pm for small games of chance

Food is served from 5-7:30pm including

**ALL-YOU-CAN-EAT HARDSHELL CRABS!**

Live auction begins at 6:30pm



## TICKETS

Adults = \$41 each

Children 12 and under = \$13 each

Tickets include: Barbecue chicken and "the fixin's"  
catered by Main Street Deli plus all-you-can-eat  
hardshell crabs by Woodpoint Seafood Grille.

Ticket deadline is August 15!

## SPONSORS

Various sponsorships are available!  
For details on sponsor levels and benefits,  
contact Scott Fish at 717-264-7101 ext. 212  
or [sfish@chambersburg.org](mailto:sfish@chambersburg.org).

For more information  
and to buy tickets,  
call 717-264-7101  
or visit

[DOWNTOWNCHAMBERSBURGPA.COM](http://DOWNTOWNCHAMBERSBURGPA.COM)



**Greater Chambersburg Chamber of Commerce**  
 100 Lincoln Way East, Suite A  
 Chambersburg, PA 17201  
 717-264-7101

PRSRTD STD  
 U.S. POSTAGE  
**PAID**  
 Permit #7  
 Chambersburg, PA

*Our Service Vision Statement*

We promise to be your **champion** in the community, **servicing your needs** to always be part of the solution.

**MAY CALENDAR OF EVENTS**

- 1-7** National Small Business Week  
 The Chamber is hosting events throughout the week, listed in the right column
- 4** J. Bryant Photography & Designs Ribbon Cutting  
 5-6 p.m., 76 S. Main St.
- 12** Lunch & Learn: Stress, facilitated by Dr. Wayne Myers of Norland Avenue Pharmacy  
 11:30 a.m.-1 p.m., Chamber of Commerce, 100 Lincoln Way East
- 13** Barbara A. Dickey & Alternative Creations Ribbon Cutting  
 Noon-1 p.m., 761 Fifth Ave. Ste. B
- 18** Edward Jones - John Reinart Ribbon Cutting  
 5-6 p.m., 127 Chambers Hill Rd.
- 18** 11/30 Network: Martin's Potato Rolls Tour  
 6:30-8:30 p.m., Martin's Potato Rolls, 1000 Potato Roll Lane, www.1130network.com
- 19** Coyle Free Library Temporary Location Ribbon Cutting  
 11-11:30 a.m., the old Jennings building on the corner of Grant St. and N. Second St.
- 19** Lunch & Learn: 10 Commandments of Good Business, facilitated by Mister Ed  
 11:30 a.m.-1 p.m., Chamber of Commerce, 100 Lincoln Way East
- 19** 11/30 Network: Third Thursday Happy Hour  
 5-7 p.m., Good-ta-Go, 1640 Orchard Dr., www.1130network.com
- 23** May Chamber Mixer, hosted by Richard's Orthopedics and Roy-Pitz Brewing Co.  
 5-7 p.m., Roy-Pitz Brewing Co., 140 N. Third St.

To register for these events and more, visit [www.chambersburg.org/events](http://www.chambersburg.org/events).

**SMALL BUSINESS WEEK EVENTS**

The Chamber is hosting the following events in celebration of National Small Business Week (all events are free and held at the Chamber unless otherwise specified):

- May 2** - Social Media for Small Businesses, 2:30 to 3:30 p.m.
- May 2** - Marketing Your Small Business, 4 to 5 p.m.
- May 3** - Digital Marketing Strategies, Noon to 1 p.m., lunch provided
- May 4** - Accessing Capitol for Small Business, Noon to 1 p.m., lunch provided
- May 5** - Cinco de Mayo Regional Mixer, 5 to 7 p.m. at Shippensburg Conference Center
- May 6** - Leadercast (registration closed, \$99)

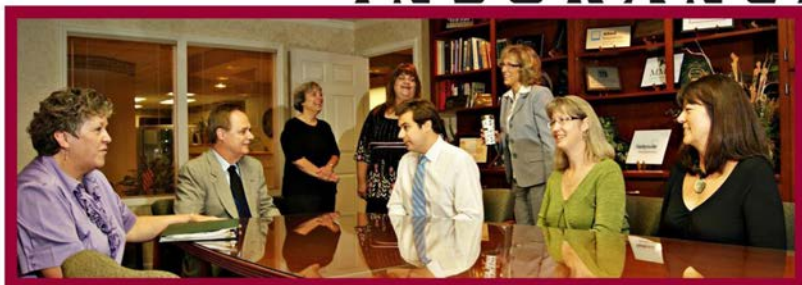
Register at [www.chambersburg.org/events](http://www.chambersburg.org/events).

*It's All About Community!*

The Outlook is the monthly publication of the Greater Chambersburg Chamber of Commerce. Ideas, opinions and statements expressed in articles by contributors are not necessarily those of the Chamber. Neither the publisher nor any individual associated with any branch of production, nor the advertisers, will be held liable for typographical misprints contained herein.

The Greater Chambersburg Chamber of Commerce is a 5-star accredited chamber, rated among the top chambers in the U.S., and is a member of the U.S. Chamber of Commerce and the PA Chamber Business & Industry.

**Valley Agency** COMPANY (717)264-4311  
**INSURANCE**



- Friendly Professional Service
- Competitive Pricing from Multiple Companies
- Stability of serving the community for over 100 years!

*"Corner of Norland & Fifth Avenues"*



UNITED STATES CHAMBER OF COMMERCE

**ACCREDITED**





**Chambersburg Chamber of Commerce  
at Municipal Stadium  
Friday, August 12th**

**\$22** Includes AYCE Picnic and Game

Picnic | 5:30 PM - 7:30 PM  
Game Time | 7:05 PM



**ASHVILLE  
TOURISTS**

**VS**



**HAGERSTOWN  
SUNS**

★ ★ ★ FOR TICKETS, CONTACT: ★ ★ ★ DOUBLE PLAY PICNIC MENU ★ ★ ★

Doug Harmon  
717.264.7101 ext. 202  
dharmon@chambersburg.org

Hamburger      Lemonade  
Cheeseburger      Iced Tea  
Hotdog      Water  
Chips

P - 301.791.6266

F - 301.791.6066

W - [www.hagerstownsuns.com](http://www.hagerstownsuns.com)